

Tenrandai

Experience the wonders of Kobe like never before! Explore hidden gems and iconic sights with your dedicated, licensed guide—all in an immersive 8-hour private tour.” Up to 4or5 pax

Nada Gogo

Basic charge

INCLUSIONS

National licensed Guiding fee and car transportation 70,000JPY ~

EXCLUSIONS

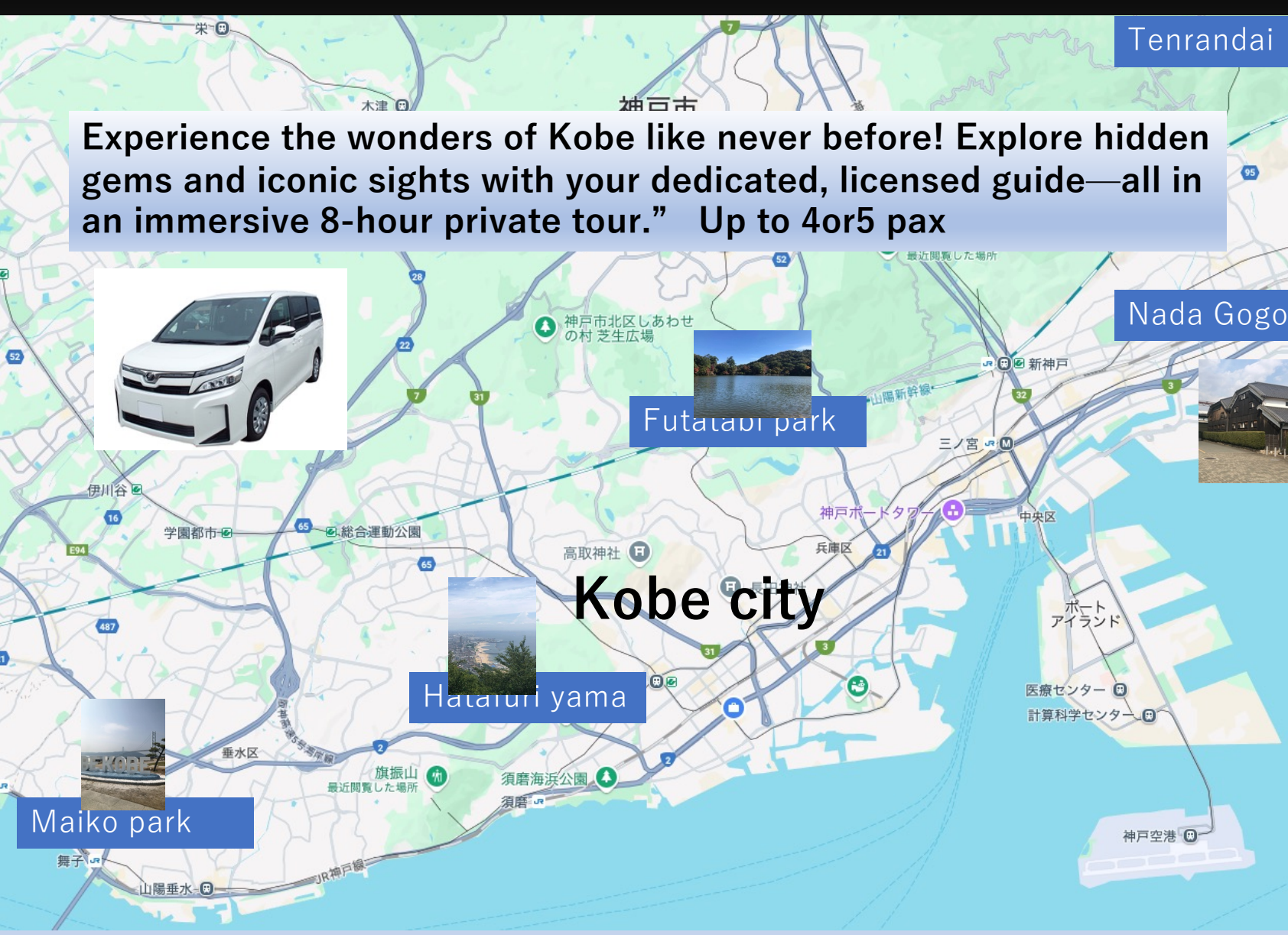
Cost of meal and sightseeing activities such as ropeway and cable car transportation and admission fee

Futatabi park

Kobe city

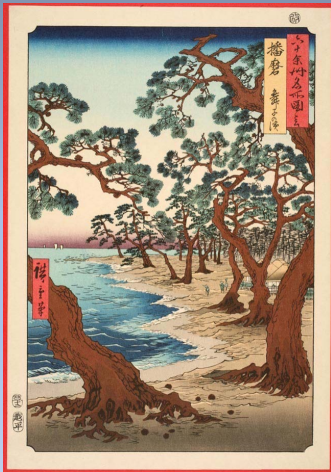
Hataruri yama

Maiko park



# Maiko Park

The area surrounding today's Maiko Park, historically known as Maiko Beach, has long captivated visitors with its breathtaking scenery. Renowned for its pristine white sands, lush green pines, and a stunning view of the world's second-longest suspension bridge, it has been cherished by Western residents and locals alike. During the Edo period, the internationally celebrated ukiyo-e artist Hiroshige Utagawa (1797–1858), famed for his masterpiece series *"The Fifty-Three Stations of the Tokaido,"* immortalized the enchanting beauty of Maiko Beach in his work *"Harima Maiko no Hama."* His portrayal highlights the timeless allure of this coastal gem.





## Mt. Hatafuri-yama: A Hidden Gem of Kobe

Rising to 253 meters, Mt. Hatafuri-yama marks the westernmost tip of the Rokko mountain range and holds a special place in the hearts of Kobe's citizens. Easily accessible by a scenic ropeway ride with the shimmering sea at your back, this mountain promises an unforgettable experience.

At the summit station, Hachibushi Summit Station, you'll find the breathtaking **Higashi Tenbodai Observation Deck**. From this vantage point, feast your eyes on the spectacular panorama of Kobe City, the serene islands of the Seto Inland Sea, and the iconic Akashi Kaikyo Bridge—all in a single, awe-inspiring glance.



## Futatabi Park,

nestled along the picturesque Futatabi Driveway, lies just a 30-minute drive from Sannomiya, the vibrant heart of Kobe. This serene haven offers a retreat into nature, inviting visitors to revel in seasonal beauty—whether in the vibrant hues of azaleas that herald spring or the red and green tapestry of autumn leaves mirrored in tranquil waters. The park also serves as a pivotal gateway to renowned hiking routes, including the Rokko Zenzan Traverse and Daishi-michi, making it a cherished destination for outdoor enthusiasts. Adding a historical dimension, the park encompasses the Kobe Foreign Cemetery, a poignant testament to those who dedicated their lives to the growth and prosperity of Kobe.



# Nada-Gogo

is a sake lover's paradise, home to a collection of renowned, long-established breweries lined up side by side. For just 500 yen, you can savor exceptional sake brands that compete to offer the finest flavors. Stop by just three of these fantastic spots, and you'll find yourself in sake heaven!

When you order sake in your home country, you might learn how to describe your sound choice, even if you can't recognize the label.

白鶴 Hakutsuru



菊正宗 Kikumasamune

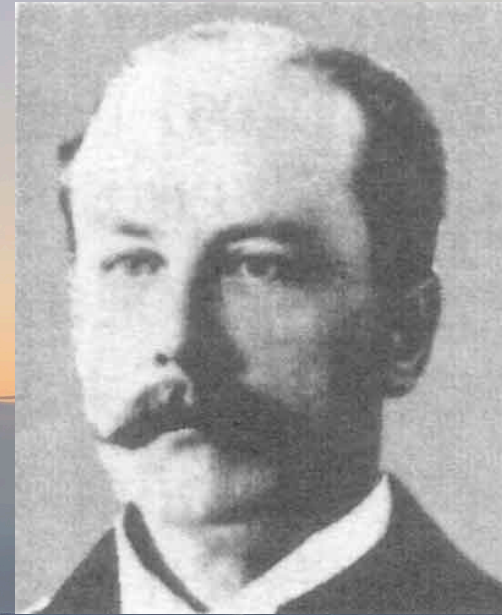


櫻政宗 Sakuramasamune

As a commemoration of Sake, a new member of the world's cultural heritage. The Never Experienced Sake Tasting in Nada-Gogo"



# Rokko Tenrandai & Arthur Hesketh Groom, the farther of Mt. Rokko



The Rokko Mountains, which form a picturesque backdrop to Kobe City, imbue the area with a natural charm. Few realize, however, that the transformation of this mountainous region into a habitable and recreational area was initiated not by a Japanese visionary but by an Englishman named A.H. Groom. During a transformative era when Japan transitioned from a feudal society to a modern nation, Kobe emerged as a hub for Western settlers. Among these pioneers, A.H. Groom played a particularly pivotal role. Enchanted by the spectacular view of Osaka Bay, Groom dedicated himself to preserving and enhancing the natural beauty of Mt. Rokko.

His passion led him to advocate for large-scale afforestation projects, propose the reinforcement of the mountain's landscape, and even invest his own resources into constructing roads. Thanks to his vision and efforts, Mt. Rokko has evolved into a vibrant recreational destination, cherished today for its hiking trails, serene retreats, and scenic vistas.